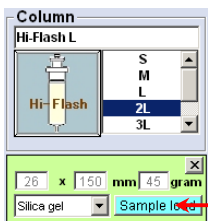


Input TLC Rf values.

Then, the maximum size of a sample that can be charged on to a column will be displayed on the monitor.

Hi-Flash Column / Universal Column / Ultra Pack

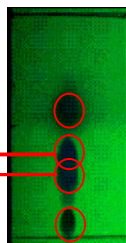
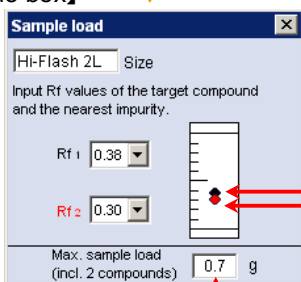
【Column table】



Select a column and click this button.

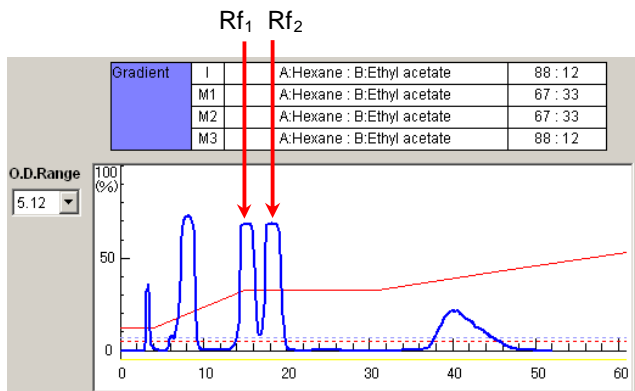
The maximum chargeable sample volume for the selected column will be displayed. The most suitable column to match the sample size can be easily selected.

【Column load dialogue box】



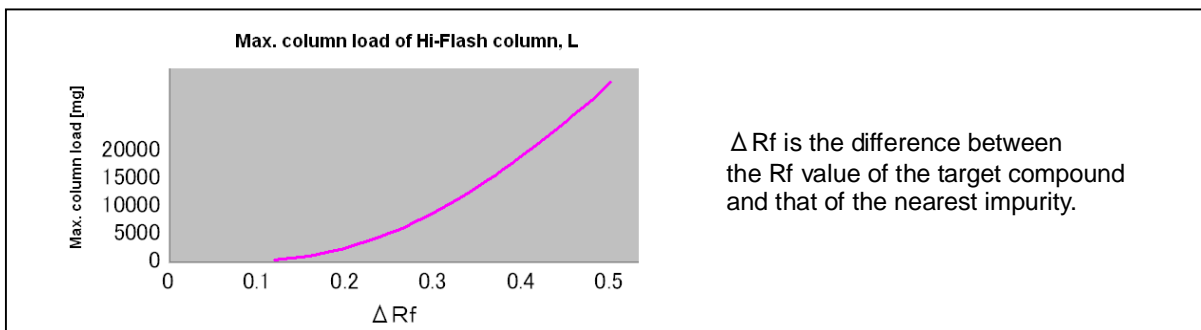
Run TLC, input the Rf values of the target compound and the nearest impurity, and the maximum sample load including these 2 compounds will be displayed.

Maximum sample load including 2 compounds



Compound1 : Butyl p-hydroxybenzoate (Rf₁)
Compound2 : Methyl p-hydroxybenzoate (Rf₂)

Any other impurities in the sample if any will not affect the maximum chargeable sample volume.



Δ Rf is the difference between the Rf value of the target compound and that of the nearest impurity.